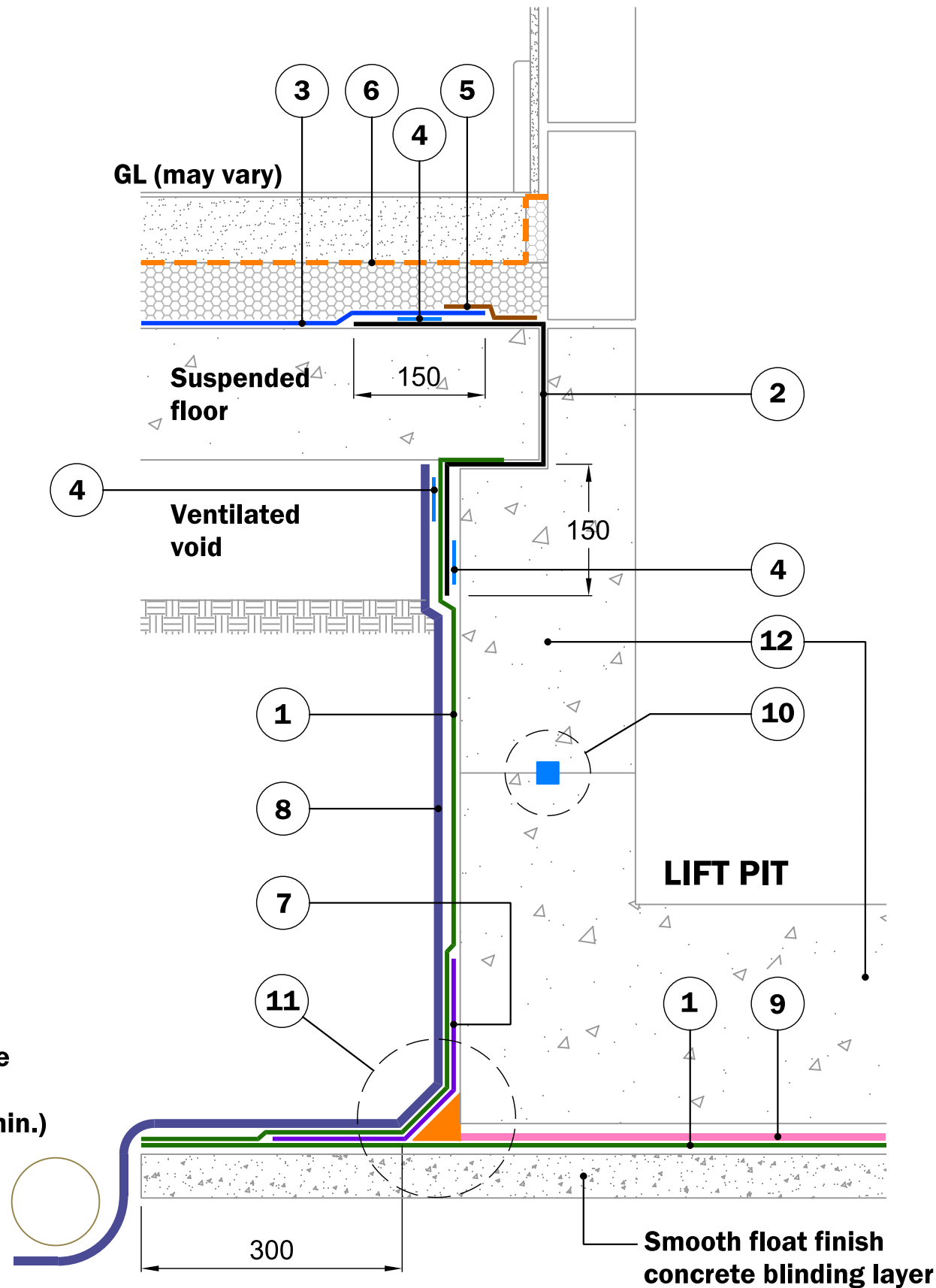


KEY TO MATERIALS :-

1	Visqueen Gas Resistant Self Adhesive Membrane on Visqueen HP Tanking Primer.
2	Visqueen Ultimate Gas DPC.
3	Visqueen Gas Barrier.
4	Visqueen Double Sided Tape.
5	Visqueen Gas Resistant Foil Tape.
6	Visqueen Vapour Barrier or HP Vapour Barrier.
7	Visqueen Pro 300mm / 500mm Detailing Strip on Visqueen HP Tanking Primer.
8	Visqueen Protect&Drain 12mm.
9	Visqueen TreadGUARD 1500.
10	Visqueen IGW Waterstop bedded in Visqueen Waterstop Adhesive.
11	Visqueen Axiom UniSeal Angle Fillet (35mm x 35mm).
12	Visqueen IGW watertight concrete.

Maintainable land drain (100mm Ø min.)



© Copyright reserved. This drawing may not be reproduced or amended without prior written permission.

Detail issued for Guidance Only. Designer's Approval Required.

Site construction sequencing should be assessed before the appropriate Visqueen Standard Detail is selected & approved by the Designer.

The Designer must ensure that the minimum gas protection score is achieved in line with the guidance given in BS 8485:2015+A1:2019.

In order to develop a robust design for protecting a structure against groundwater, a Risk Assessment must be carried out in line with the guidance given in BS 8102:2022

The Designer may need to specify one or a combination of waterproofing measures.

DPCs and DPC cavity trays to be installed in accordance with BS8215:1991 and PD6697:2019.

All Visqueen materials must be installed in strict accordance with the manufacturer's instructions. Refer to the current Visqueen datasheets.

Do Not Scale, Use Figured Dimensions only. All figured dimensions are in mm.

(Revision: Berry UK Design Centre)

Standard Detail



www.visqueen.com

Scale : NTS

Date : July 2022

Drawing No : TGB-06

Revision Status : 0



Typical Lift Pit Detail With Gas Protection. Type A (External) and Type B Protection.

VISQUEEN
0333 202 6800
www.visqueen.com
enquiries@visqueen.com